





The Convent

38,000 square foot cultural hub

An arts space and a community space

\$15.3 million adaptive reuse of 130 landmark building

Secured \$10.1 million in provincial and federal capital funding

4 arts anchor tenants; 22 private studios; 21 open studio spaces;
proposed meals on wheels restaurant; small event spaces

Sydney's historic Northend; adjacent to Sydney's downtown; three
blocks from Joan Harris Cruise Pavilion

Concept + tenant evolution over time via ongoing consultation

100 artists and creative entrepreneurs

Currently 90% leased



Holy Angels High School

Re-opened to tenants in 2013

Mix of artists and community organizations

Built in 1958; remains in good condition

Continue to operate as-is indefinitely

38,000 square feet; 3 floors

- NSP Makerspace
- Common Good Solutions
- CBU Co-op Study Club
- The Clean Foundation



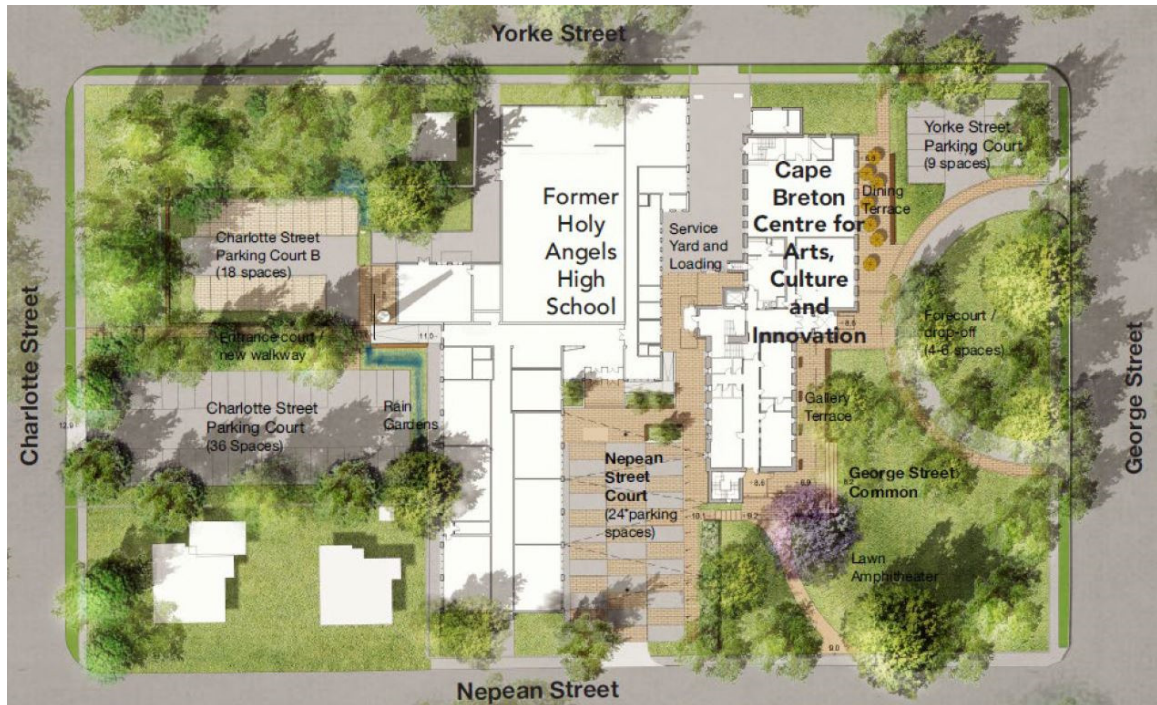
Planning for Sustainability

According to the American Institute of Architects, *for the next 50 years, the majority of architects work will be on projects that are already built*

- Ensures maximum use of building lifespan
- Eliminates the re-manufacturing of still-usable materials
- Possible to optimize existing building performance
- Preserves embodied energy (energy embodied in building stock)
- Reduces demolition landfill waste

- Preservation of existing green space as absorptive surfaces; limiting hardscapes
- Energy efficient building envelope, energy and water systems
- Promote active, public, and shared transportation
- BOMA Best Sustainable Building certification





Parking Demand Management

96 onsite parking spaces; 24 on street parking spaces

Accessible parking spaces in George and Nepean St. lots

Accessible shower for tenants using active transportation

20 minute drop-off/pick-up parking + car pooling parking

Car pooling coordination and emergency drive-homes for active transportation users

Bike parking: Nepean/George

Bus pass subsidy fund (\$4500/year)

New Dawn Meals on Wheels

- Began in Sydney in 1972 with a small group of church volunteers; New Dawn took over the administration of the program in 1983.
- Charitable, volunteer-driven program committed to fostering independence and quality of life for those unable to cook for themselves
- 2018: 12,000 meals in the Sydney area, with 76 volunteers, and provided nutritional education programming to more than 800 participants
- Offers subsidy for clients who cannot afford the full cost of meals, hosts wireless Wednesdays to teach computer literacy to seniors, hosts the Good Food Bus, organizes several Wheels to Meals events each year, creates nutrition workshops for local elementary schools





Meals on Wheels Restaurant

The Convent offers MOW the opportunity to operate a small restaurant and deliver its programming for a larger, newer, purpose-designed commercial kitchen

25-30 seats on one-half of the building's second floor (south wing)

Breakfast, lunch and dinner daily from (approximately) 8am-8pm once fully operational

- Financial sustainability of the Meals on Wheels program
- Additional volunteer opportunities for MOW volunteers
- Welcoming place for visitors to the building
- Space for conversation and collaboration

